



# Supplementary Sailing Instructions

## Keelboats, trailer boats and multihulls

The Organising Authority is the Royal Port Nicholson Yacht Club Incorporated  
103 Oriental Parade Wellington | PO Box 9674, Wellington | Tel (04) 939 7069 | Fax (04) 939 7031

---

This sheet and Addendum A are supplements to Appendix S of the Racing Rules of Sailing 2025 - 2028.

The notation '[NP]' in a rule means that a boat may not protest another boat for breaking that rule. This changes RRS 60.1

### Rules (SI 1)

SSI 1 The Wellington Regional Council Navigation and Safety Bylaws, available at <http://www.gw.govt.nz>, apply.

### Notices to competitors (SI 2)

- SSI 2 The race office is located in the RPNYC Clubhouse, email [regatta@rpnyc.org.nz](mailto:regatta@rpnyc.org.nz).
- SSI 3 The official notice board is online at [www.portnicholsonregatta.org.nz](http://www.portnicholsonregatta.org.nz), and notices may also be posted on the notice board in the RPNYC Wardroom.
- SSI 4 The race committee will broadcast on VHF Channel 62 the race area it intends to use at least 60 minutes prior to the first warning signal of the day. See Addendum C.
- SSI 5 The race committee will make courtesy broadcasts to competitors on VHF Channel 62, or another VHF channel as advised by the Race Committee.

### Signals made ashore (SI 4)

- SSI 6 Signals ashore will be displayed on the flagstaff located above the RPNYC Clubhouse.
- SSI 7 When flag AP is displayed ashore, '1 minute' is replaced with 'not less than 60 minutes' in Race Signals AP.

### Schedule of races and class flags (SIs 5 & 6)

SSI 8 The schedule of races is as follows:

Date	Class	First Warning Signal	Scheduled Number of races
------	-------	----------------------	---------------------------

Friday 21 Feb 2025	Open	09:55hrs	4
	Harbour	11:10hrs	2
Saturday 22 Feb 2025	Open	09:55hrs	2
	Harbour	10:25hrs	1
	Wellington Classic (all Classes)	13:25hrs	1
Sunday 23 Feb 2025 (Reserve Day – Wellington Classic only)	Wellington Classic (all Classes)	11:55hrs	1

SSI 9 No warning signal will be made after 14:55 on the last scheduled day of racing.

SSI 10 The class flags are:

- (a) Open Class = Flag K
- (b) Harbour Class = Flag E
- (c) Wellington Classic (Combined) = Flag T

### Courses (SI 7)

#### SSI 11. Open Class

The courses to be sailed, the order in which the marks are to be passed, and the side on which each mark is to be left are shown in Addendum A.

#### SSI 12. Harbour Class

- (a) The courses to be sailed, the order in which the marks are to be passed, and the side on which each mark is to be left will be published on the RPNYC Regatta WhatsApp channel and broadcast on VHF channel 62, approximately 15 minutes prior to the start time.
- (b) Mark locations and descriptions are shown in Addendum B.

#### SSI 13. Wellington Classic

The courses to be sailed, the order in which the marks are to be passed, and the side on which each mark is to be left are shown in Addendum C.

### Marks (SI 8)

SSI 14. The marks are described in the table in Addendums A, B & C.

### The start (SI 9)

- SSI 15. When a starting sequence is in progress, boats whose warning signal has not been made shall avoid the starting area. The starting area is defined as the area 100 metres from the starting line and marks in all directions.
- SSI 16. A boat starting later than four minutes after her starting signal will be scored Did Not Start without a hearing. This changes RRS A5.1 and A5.2.

### Change of the next leg of the course (SI 10)

SSI 17. To change the next leg of the course, the race committee will move the original mark. This changes SI 10.1.

### Shortening the Course

SSI 18. In addition to RRS 32.2, a race **may** be shortened by an announcement on VHF channel 62 or by displaying the flag 'S' over the numeral pennant 'One' at a mark, directing boats to round a specified mark of the course and proceeding directly to and cross the course finishing line for that race. In this case, RRS 32.2 will not apply.

**Time limits (SI 12)**

SSI 19. There is no prescribed time limit for the first boat to pass mark 1.

SSI 20. The following time limits apply:

<b>Course</b>	<b>Race time limit</b>	<b>Finish time window</b>
1-7	90 minutes	30 minutes
All other courses	180 Minutes	120 minutes

**Support Vessels**

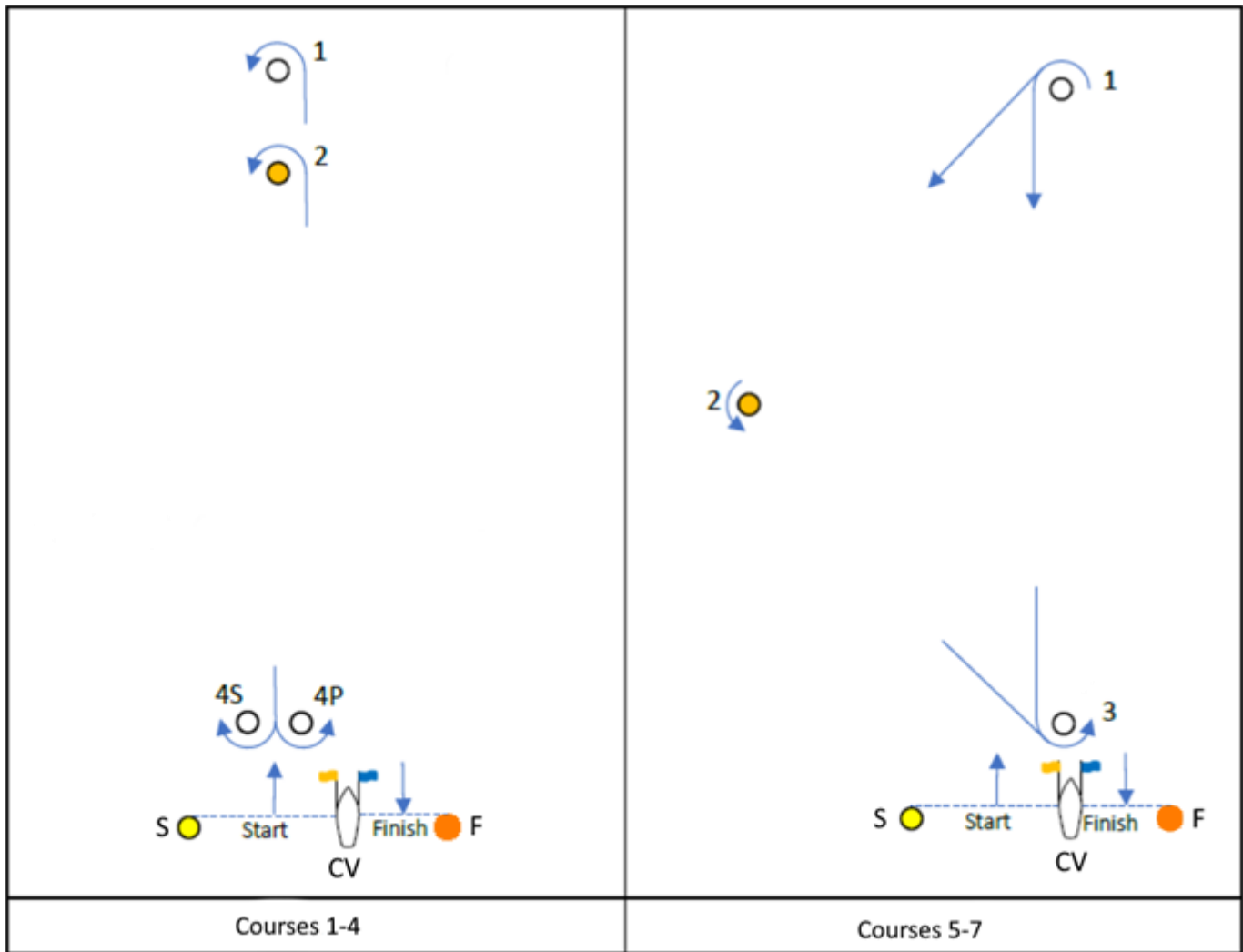
SSI 21. NP][DP]All official and support vessels shall always have an engine safety cut-out switch (kill cord) attached to the driver while the engine is running unless prior written exemption has been provided by the Organising Authority.

**Safety Regulations [NP]**

SSI 22. All boats shall check in via VHF as determined by SSI 5.

- (a) Boats shall Radio in stating their intention to race and the number of persons on board before the warning signal.
- (a) Boats failing to radio in before the warning signal may be scored DNF without a hearing.

**Addendum A – Laid courses**



Mark	Description
1	Large white cylinder
2	Large yellow cylinder
3	Large white cylinder
4P	Large white cylinder
4S	Large white cylinder
CV	Committee vessel
S	Large yellow cylinder
F	Large orange cylinder

Signal	Mark rounding order
1	Start – 1 –4P/4S – 1–Finish
2	Start – 1 –4P/4S – 1 –4P/4S – 1 –Finish
3	Start – 2 –4P/4S – 2–Finish
4	Start – 2 –4P/4S – 2 –4P/4S – 2 –Finish
5	Start – 1 – 2 – 3 – 1 – Finish
6	Start – 1 – 2 – 3 – 1 – 3 – 1 – Finish
7	Start – 1 – 2 – 3 – 1 – 2 – 3 – 1 – Finish

All mark roundings are to **port**, except gate marks (4P/4S)

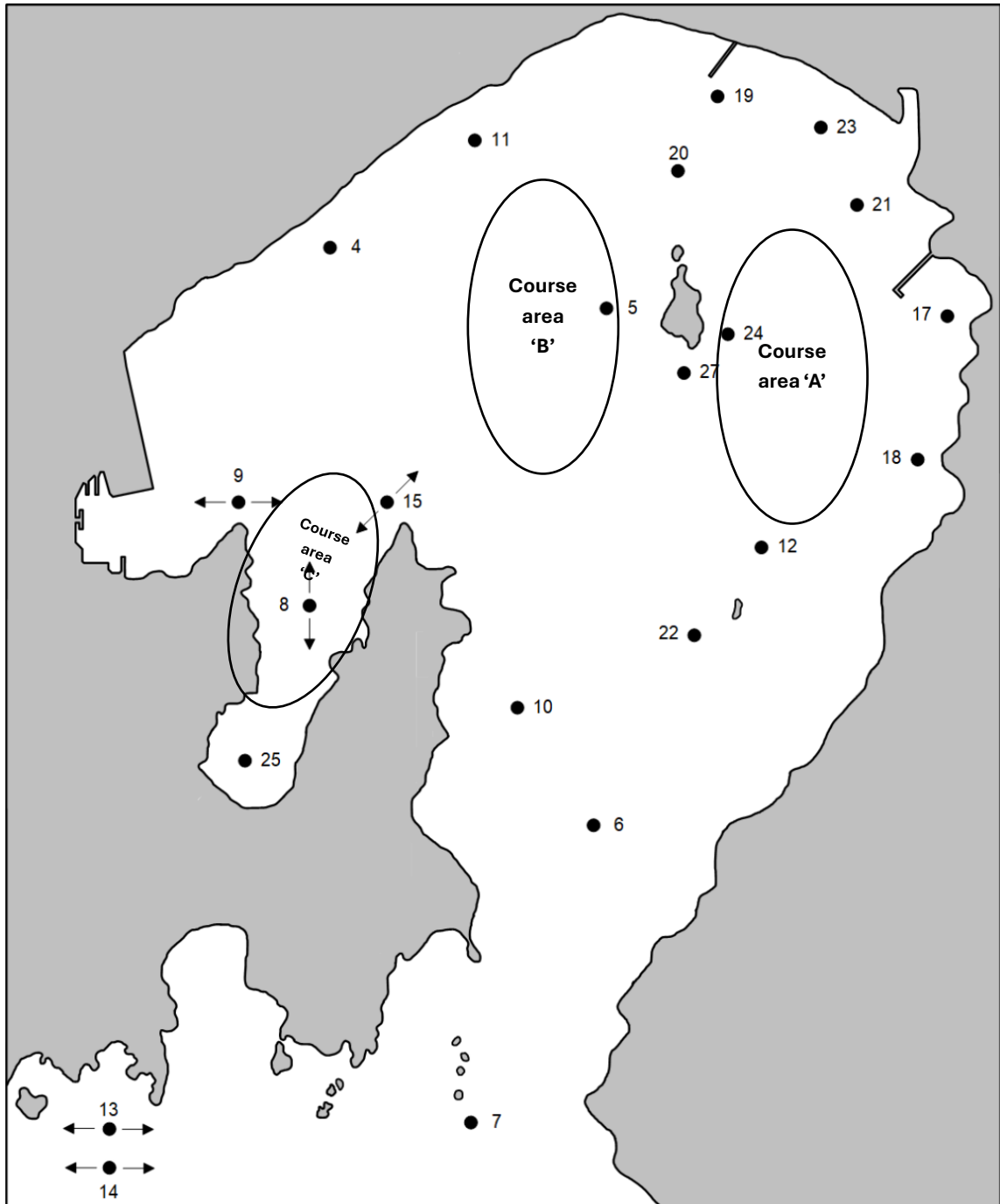
---

**Addendum B – Harbour courses and course areas**

---

**Start and finish marks and locations are as per courses 1-4 shown in Addendum A**

<b>Mark</b>	<b>Description</b>
No 1	Laid windward mark: large white cylinder
No 2	Laid windward or wing mark: large yellow cylinder
No 3	Laid leeward mark: large white cylinder
No 4	Ngauranga buoy
No 5	Somes Island buoy
No 6	Number One Leading Light (41 19.060S 174 51.350E)
No 7	Barrett Reef buoy (41 21.140S 174 50.110E)
No 8	Evans Bay buoy – located anywhere in Evans Bay
No 9	Point Jerningham buoy – laid in the vicinity of Point Jerningham
No 10	Falcon Shoal light
No 11	Korokoro buoy
No 12	Ward Island buoy
No 15	Point Halswell buoy – laid in the vicinity of Point Halswell
No 16	Oriental Bay buoy
No 17	Mahina Bay buoy
No 18	Days Bay buoy
No 19	Petone Wharf buoy
No 20	Northern Somes Island buoy
No 21	Seaview buoy
No 23	Jessie Street buoy
No 24	South Eastern Somes Island buoy
No 25	Fixed light ('Shoal Pile') at southern end of Evans Bay
No 27	South Somes buoy – laid to the south of Somes Island



Z

Course areas are indicated above. This shows the general areas in which the race committee vessel may be stationed. In general, it can be expected that:

- in a **northerly wind**, the race committee vessel will likely be on station towards the southern end of course area "A" or "C"; and
- in a **southerly wind**, the race committee vessel will likely be on station towards the northern end of course area "B" or "C".
- For the **Wellington Classic**, the race committee start vessel will be near Mark 4: Ngauranga Buoy.

---

**Addendum C – Wellington Classic course**

---

**Start: (S)**

The starting area will be in the vicinity of **Mark 4: Ngauranga Bouy**. The start line will be between a large yellow cylinder and a staff displaying an orange flag on the Committee Vessel.

**Finish: (FR)**

RPNYC: a line between the start box flagpole and an orange finishing mark laid to the north of the clubhouse. If no mark is laid, the line is an extension of the line between the start box flagpole and the light on the outer end of the boat harbour entrance.

**COURSE:**

**S – 9p – 15p – 11S – 15S - FR**

<b>Mark</b>	<b>Description</b>
No 9	Point Jerningham buoy – laid in the vicinity of Point Jerningham
No 11	Korokoro buoy
No 15	Point Halswell buoy – laid in the vicinity of Point Halswell