



2020 PORT NICHOLSON REGATTA

5 – 8 March 2020

The Organising Authority is the
Royal Port Nicholson Yacht Club Incorporated (RPNYC)

103 Oriental Parade Wellington | www.portnicholsonregatta.org.nz | (04) 939 7030 | regatta@rpnyc.org.nz

SAILING INSTRUCTIONS

1 RULES

- 1.1. The regatta will be governed by the rules as defined in *The Racing Rules of Sailing* (RRS).
- 1.2. The Yachting New Zealand Safety Regulations shall apply as follows:
 - a. For **keel boats and multi-hulls**, Part II, Category 5 amended to include a VHF transceiver, bosun's chair, and Wellington Harbour Chart NZ4633.
 - b. For **trailer yachts**, Part V, Category C amended to include a VHF transceiver, at least 10 litres of fuel, and Wellington Harbour Chart NZ4633. In addition, YNZ Safety Regulations Part V paragraphs 2.1-2.4 will apply.
 - c. For **sports boats**, Part VI, amended to include a waterproof VHF transceiver (or a VHF transceiver in a waterproof bag), one "Inshore Kit" (as described in YNZ Safety Regulations Appendix 1). In addition, YNZ Safety Regulations Part V paragraphs 2.1-2.4 will apply.
 - d. For **sports multi-hull yachts**, Part VII amended to include one "Inshore Kit" (as described in YNZ Safety Regulations Appendix 1), and Wellington Harbour Chart NZ4633. In addition, YNZ Safety Regulations Part V paragraphs 2.1-2.4 will apply.
 - e. **Boats** shall carry a serviceable inboard or outboard engine and propeller capable of driving the yacht in smooth water at a speed exceeding 4 knots.
 - f. **Sports Boats** may compete without an engine with the prior express permission of the organising authority. A decision to give or not give permission will not be grounds for redress. This changes RRS 62.1(a).
- 1.3. Boats shall report the following incidents which occur while racing to the race committee as soon as practicable:
 - a. Man overboard
 - b. An injury requiring medical treatment
 - c. Contact with another yacht during a race causing serious damage
 - d. Any damage which materially adversely affects the seaworthiness of the yacht
 - e. Retiring from a race.
- 1.4. The [Wellington Regional Council Navigation and Safety Bylaws](#) will apply.
 - a. For the avoidance of doubt, when a boat sailing under the rules meets a vessel that is not, she shall comply with the Wellington Harbour Bylaws.





- b. There shall be a moving prohibited zone extending to 100m astern and 100m to each side, and continuing at such width to 500m ahead, of every vessel larger than 500 GRT.
 - c. A boat shall be disqualified without a hearing if a vessel larger than 500 GRT reports to the Organising Authority, to the Harbour Master, or to Maritime New Zealand, that the boat has either entered her moving prohibited zone or impeded her navigation (including but not limited to requiring her to take avoiding action). This changes RRS 63.1.
- 1.5. Rules applying to boats with lifting keels, canting keels and movable ballast are changed as follows:
- a. Boats with lifting keels shall have keels locked in the down position and not moved whilst racing. This changes RRS 52.
 - b. Yachts with movable ballast, in the form of a canting keel or water ballast, may move that ballast to increase or decrease weight, or to change trim or stability. This changes RRS 51.
 - c. RRS 52 shall not apply to the adjustment of a canting keel or water ballast.
- 1.6. RRS Appendix T (**Arbitration**) will apply.
- 1.7. Yachting New Zealand Rules - *Performance Handicap Racing Fleet (PHRF) 2019-2020* will apply to boats racing under PHRF.
- 1.8. No spinnakers are permitted in the Charity Cup Race.

2 NOTICES TO COMPETITORS

Notices to competitors (NTCs) will be posted on the regatta website www.portnicholsonregatta.org.nz and on the official notice board in the RPNYC Wardroom.

3 CHANGES TO SAILING INSTRUCTIONS

Any change to these sailing instructions will be posted before **0900 hours** on the day it will take effect, except that any change to the schedule of races will be posted by **2000 hours** on the day before it will take effect.

4 SIGNALS MADE ASHORE

- 4.1. Signals made ashore will be displayed at the RPNYC Clubrooms.
- 4.2. An announcement on VHF channel 62 will be made when signals are displayed ashore.
- 4.3. When flag AP is displayed ashore, '1 minute' is replaced with 'not less than 60 minutes' in the race signal AP.





2020 PORT NICHOLSON REGATTA 5TH-8TH MARCH

5 SCHEDULE OF RACES

5.1. The schedule of races and the time of the first warning signal is set out in the table below:

	Thursday 5 March	Friday 6 March	Saturday 7 March	Sunday 8 March
Time of first warning signal	1800	1025	0955	0955
Divisions A - C	Charity Cup Race		12 Races (max)	
Division D - Sports Boats	No Racing		8 Races (max)	

- 5.2. To alert boats that a race or sequence of races will begin soon, the orange starting line flag will be displayed with one (1) sound at least five (5) minutes before a warning signal is made.
- 5.3. For Full and Weekender Series there may be up to five (5) races on any day for any division.
- 5.4. On the last scheduled day of racing no warning signal will be made after **1355hrs**.

6 DIVISIONS AND FLAGS

- 6.1. Boats will be allocated to a division by the organising authority.
- 6.2. The Class flags for each division are:

Division A	K
Division B	E
Division C	D
Division D (Sports Boats)	G
Charity Cup Race	T

7 RACING AREAS

- 7.1. **Attachment A** shows the location of course areas.
- 7.2. The race committee will broadcast on VHF Channel 62 the racing area it intends to use **at least 60 minutes** prior to the first warning signal of the day.

8 THE COURSES

- 8.1. The diagrams in **Attachment B** show the courses, the order in which marks are to be passed, and the side on which each mark is to be left for **Divisions A, B, C and D**.
- 8.2. No later than the warning signal, the race committee signal vessel may display the approximate compass bearing of the first leg.
- 8.3. The race committee may set a **special course** that is not described in **Attachment B**. If a special course is set, the race committee shall display **course number 22** and broadcast details of the course on **VHF Channel 62** at least 15 minutes before the warning signal. The finishing line for a special course may be in a different vicinity to the starting line.
- 8.4. The last race of each day may be a harbour course with a **finishing line** located near **Point Jerningham** towards Oriental Bay.





9 MARKS

- 9.1. Marks, including the starting and finishing marks, are described in **Attachment B**.
- 9.2. A race committee vessel signalling a change of a leg of the course is a mark as provided in SI 13.2.

10 AREAS THAT ARE OBSTRUCTIONS

The following areas are obstructions:

- a. A line between the virtual **Mokopuna Island** fairway mark (41°14.900S, 174°51.970E) and the nearest point of land at Mokopuna Island.
- b. A line between **Point Jerningham light** and the nearest point of land at Point Jerningham.

11 THE START

11.1. For the Charity Cup Race:

- a. The Starting line is a line between the RPNYC start box flagpole and the starting mark laid to the north of the clubhouse. If no mark is laid, the line is an extension of the line between the start box flagpole and the light on the outer end of the boat harbour entrance.
- b. The start will be a pursuit start. The start times will be provided at or before the briefing.
- c. The Race Committee may also confirm boat start times by VHF Channel 62.
- d. The class flag for the first boat will be T. For subsequent yacht starts, the preparatory flag "P" accompanied by one sound signal will be displayed one minute before each starting time. Each start will be indicated by the lowering of flag "P" accompanied by one sound signal. This changes RRS26.

11.2. For all other races:

- a. The starting line will be between a staff displaying an orange flag on a race committee boat at the starboard end and the course side of the start mark at the port end.
- b. For the first start each day the order of starts will be Division A, Division D, Division B, then Division C.
- c. Boats whose warning signal has not been made shall avoid the starting area during the starting sequence for other races.
- d. A boat that does not start **within 4 minutes** after her starting signal will be scored Did Not Start without a hearing. This changes RRS A4 and A5.

- 11.3. If any part of the boat's hull, crew or equipment is on the course side of the starting line at the start signal, the race committee will attempt to broadcast her name and/or sail number on VHF Channel 62. Failure of the race committee to make a broadcast or for a boat not to receive a broadcast will not be grounds for redress. This changes RRS 62.1(a)



12 CHANGE OF THE NEXT LEG OF THE COURSE

- 12.1. To change the next leg of the course, the race committee will move the original mark (or the finishing line) to a new position.
- 12.2. Except at a gate, boats shall pass between the race committee vessel signalling the change of the next leg and the nearby mark, leaving the mark to port and the race committee vessel to starboard. This changes RRS 28.

13 THE FINISH

- 13.1. For the Charity Cup Race: The finishing line is a line between the RPNYC start box flagpole and the starting mark laid to the north of the clubhouse. If no mark is laid, the line is an extension of the line between the start box flagpole and the light on the outer end of the boat harbour entrance.
- 13.2. For all other races: The finishing line will be between a staff displaying a blue flag on a race committee boat at the starboard end and the course side of the finish mark at the port end, as described in diagrams in **Attachment B**.

14 PENALTY SYSTEM

The scoring penalties under RRS 44.3 will not be used.

15 TIME LIMITS AND TARGET TIMES

- 15.1. The **Race Time Limit** is the time limit for the first boat to sail the course and finish.
- 15.2. The **Finishing Window** is the Time limit for boats to finish after the first boat sails the course and finishes.
- 15.3. Boats failing to finish within the Finishing Window shall be scored **Did Not Finish** without a hearing. This changes RRS 35, A4 and A5
- 15.4. The following Race Time Limits and Finishing Windows apply:

	Target Time	Race Time Limit	Finishing Window
Laid Courses	40 minutes	60 minutes	30 minutes
Harbour Courses	N/A	120 minutes	60 minutes

16 PROTESTS AND REQUESTS FOR REDRESS

- 16.1. Protest forms are available on the regatta website, the notice board, and the race office, located at the Board Room, RPNYC Clubhouse. Protests and requests for redress or reopening shall be delivered to the race office within the time limit.
- 16.2. The **protest time limit** is **60 minutes** after the last boat has finished the last race of the day or the race committee signals no more racing today, whichever is later. The same time limit applies to all divisions.
- 16.3. The protest time limit for a protest by the race committee or protest committee is 20 minutes after the protest time limit specified in 17.2. This changes RRS 61.1(b).



- 16.4. **Notices** will be posted no later than **30 minutes** after the protest time limit to inform competitors of hearings in which they are parties or named as witnesses. Hearings will be held in the protest room, located at RPNYC Noel Manthel Boardroom, beginning at the time posted.
- 16.5. Notices of protests by the race committee, technical committee or protest committee will be posted to inform boats under RRS 61.1(b).
- 16.6. Breaches of sailing instructions 11.2(c) (start area), 18 (safety regulations), 21 (advertising), 22 (support boats) and 23 (radio communication), will not be grounds for a protest by a boat. This changes RRS 60.1(a).
- 16.7. The race committee may protest a boat for a breach of sailing instructions listed in 16.6, or for any matter related to safety. This may also be on the basis of a report from an interested party, which changes rule 60.2(a).
- 16.8. The protest committee may apply some other penalty as an alternative to disqualification, as provided for in rule 64.1(a). The alternative penalty may be a warning, a scoring penalty or an elapsed time penalty. The quantum of a scoring penalty or elapsed time penalty shall be determined by the protest committee. The scoring abbreviation for a discretionary penalty imposed under this instruction will be DPI. This changes rule A11.
- 16.9. On the last scheduled day of racing a request for redress based on a protest committee decision shall be delivered no later than **30 minutes** after the decision was posted. This changes RRS62.2.

17 SCORING

- 17.1. Races will be scored on PHRF, general handicap and line, where applicable.
- 17.2. PHRF results will be calculated for all yachts with a valid PHRF handicap, unless the race committee is advised by a representative of the boat that it is not sailing in its measured configuration.
- 17.3. The Charity Cup Race will be scored alone and will not form part of the series.
- 17.4. A minimum of one (1) race is required to be completed to constitute a series.
- 17.5. When fewer than five (5) have been completed, a boat's series score will be the total of her race scores.
- 17.6. When from six (6) to nine (9) races have been completed, a boat's series score will be the total of her race scores excluding her worst score.
- 17.7. When ten (10) or more races have been completed, a boat's series score will be the total of her race scores excluding her two worst scores.
- 17.8. This changes A2.1.

18 SAFETY REGULATIONS

- 18.1. The race committee may protest a boat for a breach of the safety regulations.
- 18.2. Boats not leaving the shore for a scheduled race shall promptly notify the race office.
- 18.3. A boat retiring from racing shall notify the race committee before leaving the racing area, or if that is not possible, shall notify the Race Office as soon as possible after returning ashore.





19 REPLACEMENT OF CREW OR EQUIPMENT

- 19.1. All competitors racing in the regatta shall have completed a crew entry and be registered with the boat they are racing on. Boats can race different registered crew on different days, except no changes to crew can be made on the day after the first warning signal without the express approval of the race committee.
- 19.2. Substitution of crew will not be allowed without prior written approval of the race committee.
- 19.3. Substitution of damaged or lost equipment will not be allowed unless authorised by the race committee. Requests for substitution shall be made to the committee at the first reasonable opportunity.

20 EQUIPMENT AND MEASUREMENT CHECKS

On the water, a boat can be instructed by a member of the race committee or the technical committee to proceed immediately to a designated area for inspection. Ashore, equipment may be inspected or measured at any time.

21 EVENT ADVERTISING

Boats shall display event advertising supplied by the organizing authority. If this rule is broken, World Sailing Regulation 20.9.2 applies.

22 SUPPORT VESSELS

- 22.1. Support vessels are allowed and shall be registered with the race committee.
- 22.2. Support vessels shall stay outside areas where boats are racing from the time of the preparatory signal for the first division to start until all boats have finished or retired or the race committee signals a postponement, general recall or abandonment.
- 22.3. When the wind is less than 10 knots support vessels shall not exceed 5 knots within 500m of the area where boats are racing.
- 22.4. When requested to do so by the race committee via VHF Channel 62, support vessels shall remain afloat to assist all sailors.

23 RADIO COMMUNICATION

- 23.1. All radio communication between competitors and the race committee shall be through **VHF Channel 62** unless the race committee determines otherwise.
- 23.2. All boats and support boats shall maintain a listening watch on VHF Channel 62. The failure to receive a radio message from the race committee will not be grounds for redress. This changes rule 62.1(a).

24 PRIZES

- 24.1. Prizes will be awarded for 1st, 2nd and 3rd on PHRF or general handicap in each division, where applicable.





24.2. The following Trophies will be awarded:

- Ross Telford Memorial Trophy – Port Nicholson Regatta Champion as determined by the organising authority.
- Division A PHRF Shield
- Division A General Handicap Trophy
- Division B PHRF Shield
- Division B General Handicap Trophy
- Division C PHRF Shield
- Division C General Handicap Trophy
- Roger Land Trophy - for Young 88 design boat awarded on line
- Young 88 Owner/Helm Trophy - awarded on general handicap
- Charity Cup – awarded on general handicap for the Charity Cup Race

24.3. Other prizes will be awarded at the discretion of the regatta committee or organising authority.

25 DISCLAIMER OF LIABILITY

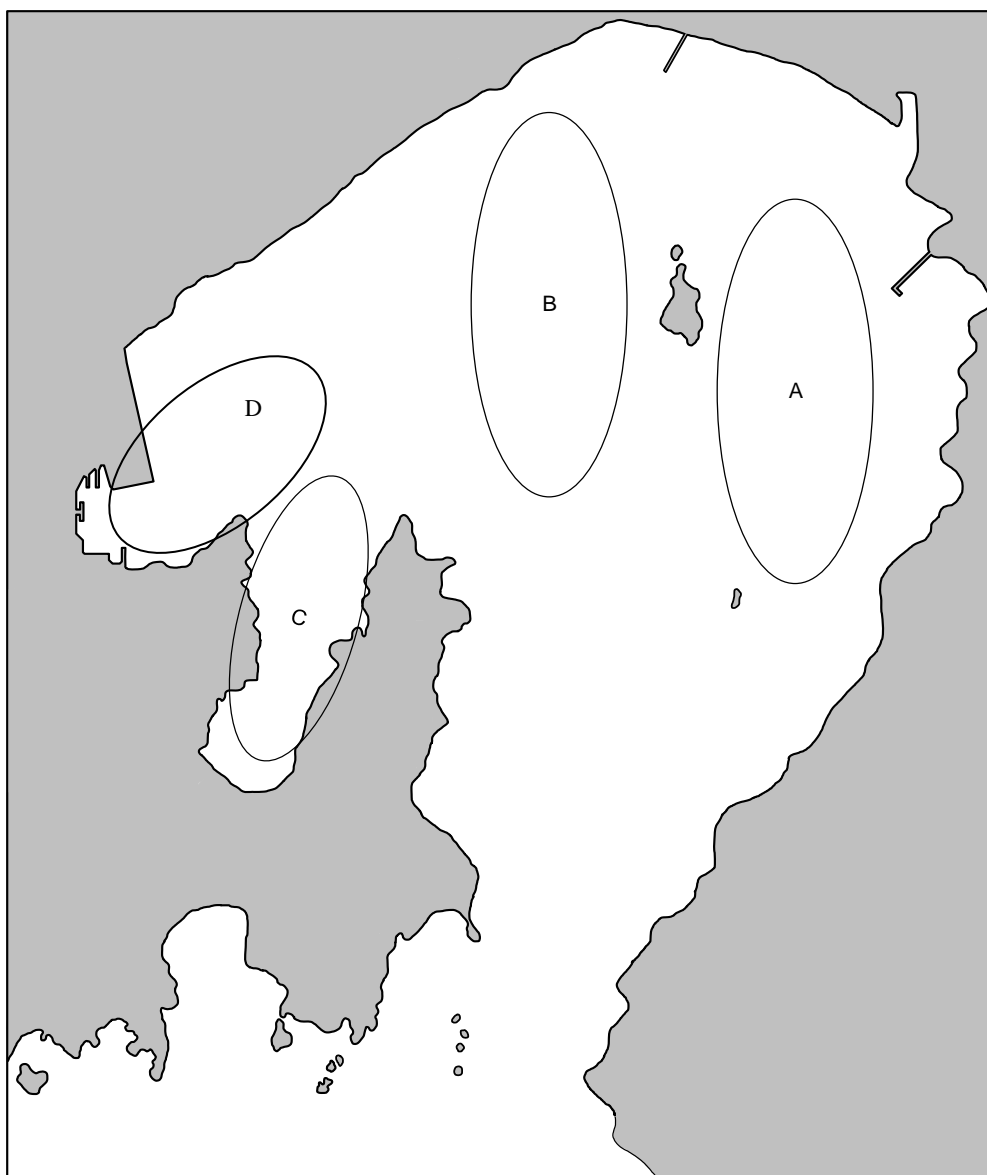
Competitors participate in the regatta entirely at their own risk. See RRS 4, Decision to Race. The organising authority will not accept any liability for material damage or personal injury or death sustained in conjunction with or prior to, during, or after the regatta.

26 INSURANCE

Each participating boat shall be insured with valid third-party liability insurance with a minimum cover of \$250,000 per incident or the equivalent.



Attachment A – Course Areas



Course areas are indicated above. This shows the general areas in which the race committee vessel may be stationed. In general, it can be expected that:

- *in a **northerly** wind, the race committee vessel will likely be on station towards the southern end of course area "A" or "C"; and*
- *in a **southerly** wind, the race committee vessel will likely be on station towards the northern end of course area "B" or "C".*

Course are D will be used for the Charity Cup Race only.



Attachment B – Courses and Marks

Obstructions: Refer to Sailing Instruction 10 for areas that are obstructions.

Marks

- **Starting line mark** will be a yellow cylindrical buoy.
- **Finishing line mark** will be a red cylindrical buoy.
- **Laid marks 1, 3, 4P, and 4S** will be white buoys.
- **Mark 1A** will be an orange spherical buoy.
- **Mark 2** will be an orange cylindrical buoy.
- **Mark 3** will be a green cylindrical buoy.
- **Marks 4S/4P** may be laid above or below the race committee boat for courses 1-9.
- **Harbour marks 4, 5, and 11** are fixed harbour marks and will be orange round buoys. Approximate positions for these marks will be posted on the official notice board.
- **Mark 9** will be a white buoy laid near the top of Evans Bay or in the vicinity of Pt Jerningham.
- **Mark 10** is the Falcon Shoal light (41°18.26 S, 174°51.02 E).
- **Mark 6** is the Front Lead (41°19.06 S, 174°51.35 E).

Course Number	Laid Courses
	<i>All mark roundings are to port, except gate marks (4S/4P)</i>
1	Start – 1 – 1A – 4S/4P – 1 – 1A – Finish
2	Start – 1 – 1A – 4S/4P – 1 – 1A – 4S/4P – 1 – 1A – Finish
3	Start – 2 – 4S/4P – 2 – Finish
4	Start – 2 – 4S/3P – 2 – 4S/4P – 2 – Finish
5	Start – 3 – 4S/4P – 3 – Finish
6	Start – 3 – 4S/4P – 3 – 4S/4P – 3 – Finish
7	Start – 1 – 2 – 3 – 1 – Finish
8	Start – 1 – 2 – 3 – 1 – 3 – 1 – Finish
9	Start – 1 – 2 – 3 – 1 – 2 – 3 – 1 – Finish

Course Number	Harbour Courses
	<i>Mark roundings are to port (nP) or starboard (nS) where 'n' denotes the mark number</i>
10	S - 1P - 10S - 9P - FR
11	S - 1P - 6S - 9P - FR
12	S - 1P - 10S - 5P - 8S - 9P - FR
13	S - 1P - 6S - 5P - 8S - 9P - FR
14	S - 6S - 9P - FR
15	S - 6S - 4P - 8S - 9P - FR
16	S - 4P - 8P - 4P - 9S - FR
17	S - 4S - 10P - 5P - 9S - FR
18	S - 4S - 10P - 11P - 9S - FR
19	S - 4S - 6P - 5P - 9S - FR
20	S - 8P - 4P - 8P - 9P - FR
21	S - 8P - 4P - 8P - 4P - 8P - 9P - FR
22	Special Course: Broadcast on VHF 62 at least 15 mins before warning signal.



