



Supplementary Sailing Instructions

Keelboats, trailer boats and multihulls

The Organising Authority is the Royal Port Nicholson Yacht Club Incorporated
103 Oriental Parade Wellington | PO Box 9674, Wellington | Tel (04) 939 7069 | Fax (04) 939 7031

This sheet and Addendum A are supplements to Appendix S of the Racing Rules of Sailing (page 146 RRS 2021-2024).

The notation '[NP]' in a rule means that a boat may not protest another boat for breaking that rule. This changes RRS 60.1(a).

Rules

SSI 1. The Wellington Regional Council Navigation and Safety Bylaws, available at <http://www.gw.govt.nz>, apply.

Notices to competitors (SI 2)

SSI 2. The race office is located in the RPNYC Clubhouse, email regatta@rpnyc.org.nz.

SSI 3. The official notice board is online at www.portnicholsonregatta.org.nz, and notices may also be posted on the notice board in the RPNYC Wardroom.

SSI 4. The race committee will broadcast on VHF the race area it intends to use at least 60 minutes prior to the first warning signal of the day. See Addendum C.

SSI 5. The race committee will make courtesy broadcasts to competitors on VHF Channel 62, or another VHF channel as advised by the Race Committee.

Signals made ashore (SI 4)

SSI 6. Signals ashore will be displayed on the flagstaff located above the RPNYC Clubhouse.

SSI 7. When flag AP is displayed ashore, '1 minute' is replaced with 'not less than 60 minutes' in Race Signals AP.

Schedule of races and class flags (SIs 5 & 6)

SSI 8. The class flags are:

- Division A = Flag K
- Division B = Flag E

SSI 9. Nine races are scheduled. Up to four races may be raced each day.

SSI 10. The scheduled time of the warning signal for the first race each day is 1025.

SSI 11. On the last scheduled day of racing no warning signal will be made after 1455.

Courses (SI 7)

SSI 12. The courses to be sailed, the order in which the marks are to be passed, and the side on which each mark is to be left are shown in Addendum A and Addendum B.

Marks (SI 8)

SSI 13. The description of the marks is in the table in Addendum A and Addendum B.



The start (SI 9)

SSI 14. When a starting sequence is in progress, boats whose warning signal has not been made shall avoid the starting area. The starting area is defined as the area 100 metres from the starting line and marks in all directions.

SSI 15. A boat starting later than four minutes after her starting signal will be scored Did Not Start without a hearing. This changes RRS A5.1 and A5.2.

Change of the next leg of the course (SI 10)

SSI 16. To change the next leg of the course, the race committee will move the original mark. This changes SI 10.1.

Time limits (SI 12)

SSI 17. There is no prescribed time limit for the first boat to pass mark 1.

SSI 18. The following time limits apply:

Course	Race time limit	Finish time window
1-7	90 minutes	30 minutes
10-21	180 Minutes	120 minutes

Support Vessels

SSI 19. [NP][DP]All official and support vessels shall always have an engine safety cut-out switch (kill cord) attached to the driver while the engine is running unless prior written exemption has been provided by the Organising Authority.

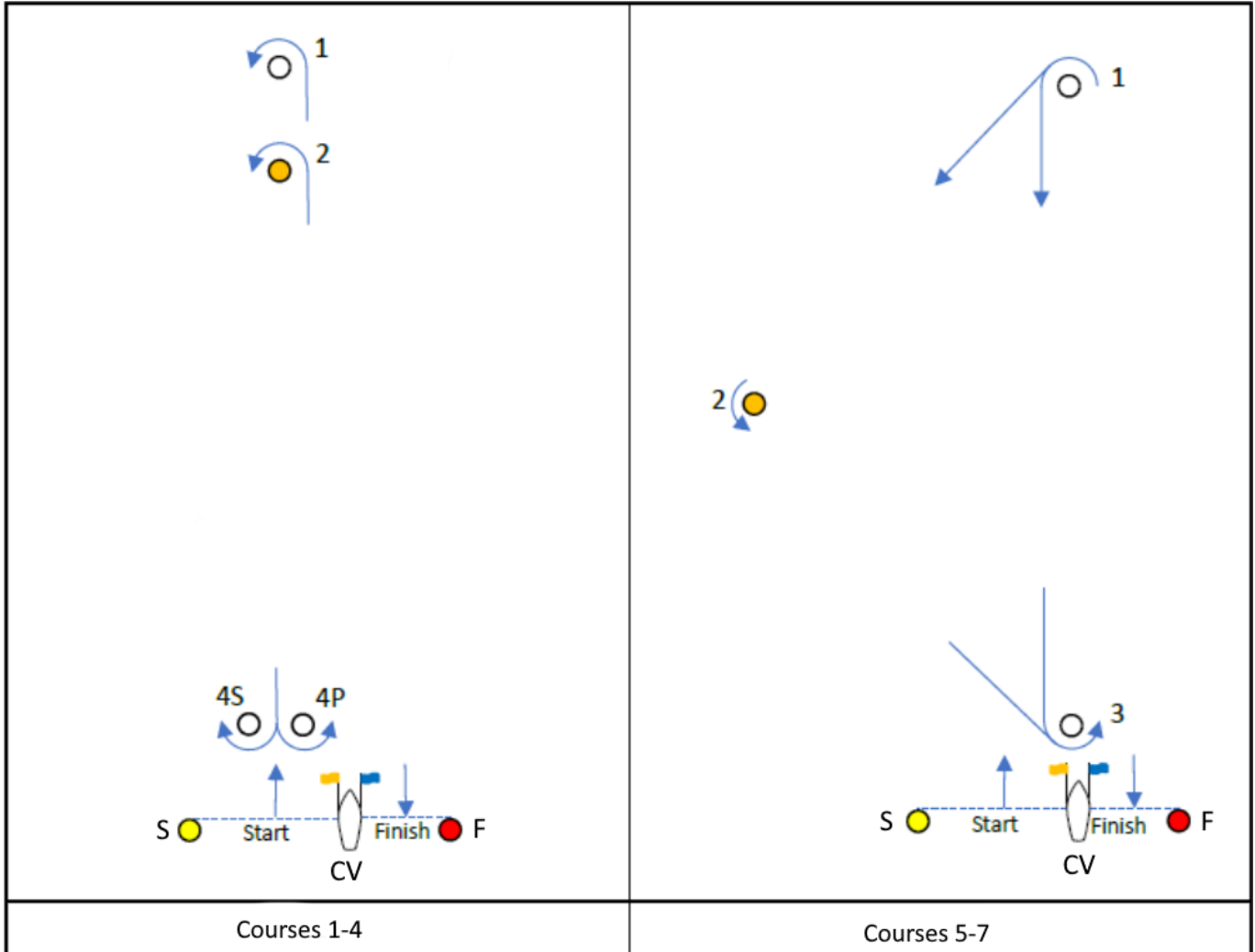
Safety Regulations [NP]

SSI 20. All boats shall check in via VHF as determined by SSI 5.

- (a) Boats shall Radio in stating their intention to race and the number of persons on board before the warning signal.
- (b) Boats failing to radio in before the warning signal may be scored DNF without a hearing. This changes RRS35, A4 and A5.



Addendum A – Laid courses



Mark	Description
1	Large white cylinder
2	Large yellow cylinder
3	Large white cylinder
4P	Large white cylinder
4S	Large white cylinder
CV	Committee vessel
S	Large yellow cylinder
F	Large orange cylinder

Signal	Mark rounding order
1	Start – 1 – 4P/4S – 1 – Finish
2	Start – 1 – 4P/4S – 1 – 4P/4S – 1 – Finish
3	Start – 2 – 4P/4S – 2 – Finish
4	Start – 2 – 4P/4S – 2 – 4P/4S – 2 – Finish
5	Start – 1 – 2 – 3 – 1 – Finish
6	Start – 1 – 2 – 3 – 1 – 3 – 1 – Finish
7	Start – 1 – 2 – 3 – 1 – 2 – 3 – 1 – Finish

All mark roundings are to **port**, except gate marks (4P/4S)

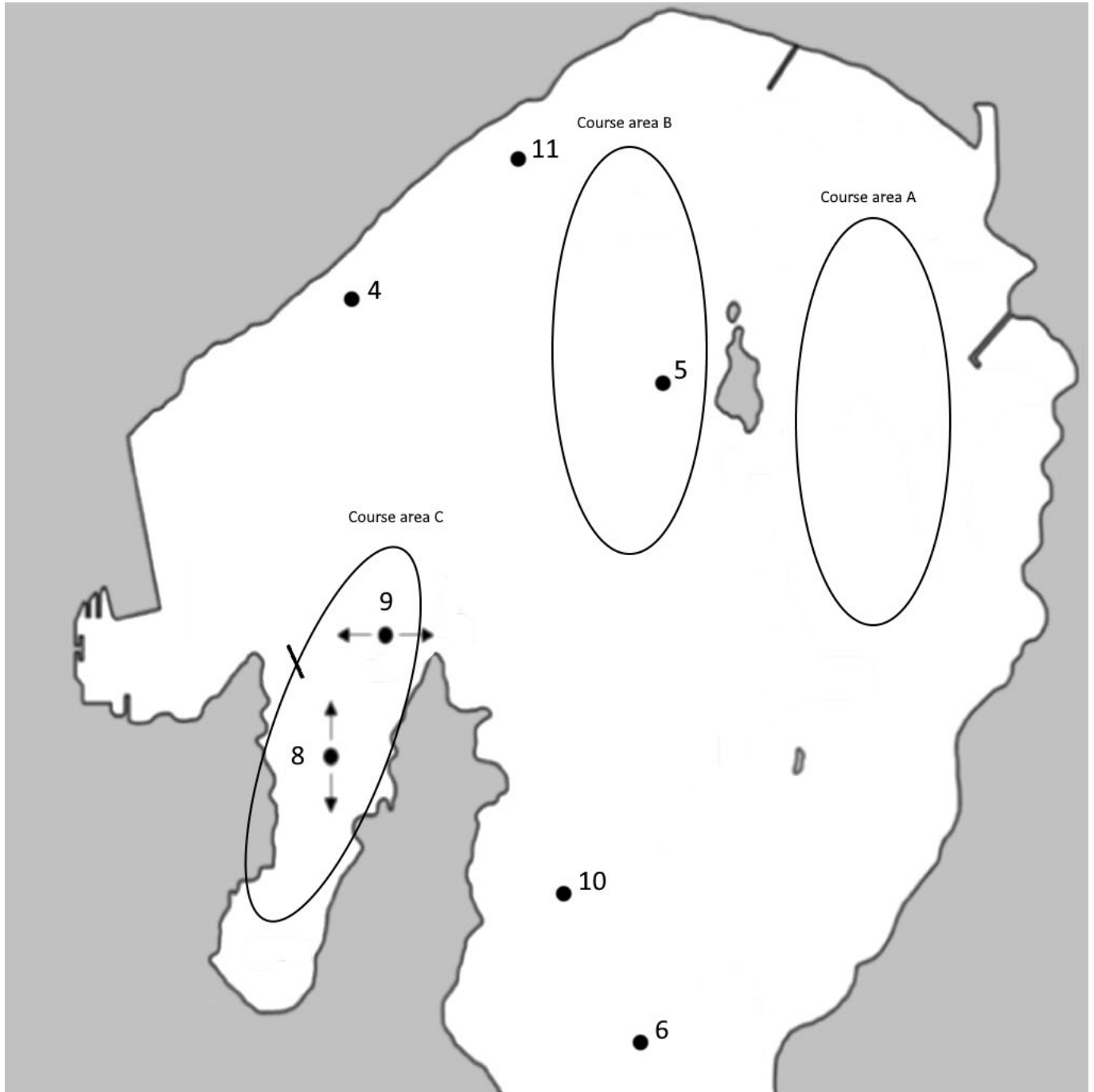


Addendum B – Harbour courses and course areas

Mark	Description
1	Large white cylinder
CV	Committee vessel
S	Large yellow cylinder
F	Large red cylinder
4	Harbour mark 4 will be an orange round or cylindrical buoy located at approximately 41 15.250' S 174 49.090' E
5	Harbour mark 5 will be an orange round or cylindrical buoy located at approximately 41 15.599' S 174 51.164' E. Note this may be replaced by a large white or yellow cylinder as advised by the Race Committee.
11	Harbour mark 11 will be an orange round or cylindrical buoy located at approximately 41 14.570' S 174 50.549' E
6	Harbour mark 6 is the Front Lead located at 41°19.06 S 174°51.35 E
8	Harbour mark 8 will be a white buoy laid inside Evans Bay
9	Harbour mark 9 will be a white buoy laid near the centre of the top of Evans Bay
10	Harbour mark 10 is the Falcon Shoal light located at 41°18.26 S 174°51.02 E

The finishing line for a harbour course will be located near Point Jerningham. The finishing mark (F) will be laid to starboard of the committee vessel.

Signal	Mark rounding order
10	Start – 1P – 10S – Finish
11	Start – 1P – 6S – Finish
12	Start – 1P – 10S – 5P – 8S – 9P – Finish
13	Start – 1P – 6S – 5P – 8S – 9P – Finish
14	Start – 6S – 9P – Finish
15	Start – 6S – 4P – 8S – 9P – Finish
16	Start – 8P – 4P – 8P – 9P – Finish
17	Start – 8P – 4P – 8P – 4P – 8P – 9P – Finish
18	Start – 4P – 8P – 4P – 9S – Finish
19	Start – 4S – 10P – 5P – 9S – Finish
20	Start – 4S – 10P – 11P – 9S – Finish
21	Start – 4S – 6P – 5P – 9S – Finish



Course areas are indicated above. This shows the general areas in which the race committee vessel may be stationed. In general, it can be expected that:

- *in a northerly wind, the race committee vessel will likely be on station towards the southern end of course area "A" or "C"; and*
- *in a southerly wind, the race committee vessel will likely be on station towards the northern end of course area "B" or "C".*